

# Welcome to 20 Bloorview Place



**ASHLEY LO**

SALES REPRESENTATIVE

CENTURY 21 TIMES SQUARE REALTY INC., BROKERAGE

# 20 Bloorview Place

LOCATION, LOCATION, LOCATION!!!

For those who demand an upscale lifestyle in the city without compromising a natural setting at the luxurious Aria Condominiums!

Beautiful 1140 sq ft corner-unit available at Leslie and Sheppard with a great layout:

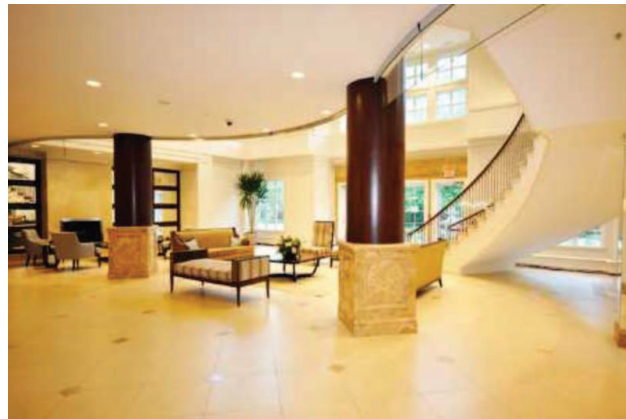
- 2 large bedrooms (walk-in closets in each room)
- 2 baths with marble throughout
- Eat in kitchen with granite countertops and stainless steel appliances
- Beautiful NW view on a high floor with soaring 9 ft ceilings
- Hardwood floors throughout
- Over sized terrace (approx 180 sq ft)
- One parking spot (*rare* second parking available at an additional cost)
- One locker

Just steps from Sheppard subway, 401, 404 and DVP. Close to Bayview Village, Fairview mall, schools, hospital, trails and much more!

Please visit [www.ashleylo.com/20bloorviewplace](http://www.ashleylo.com/20bloorviewplace) for more information

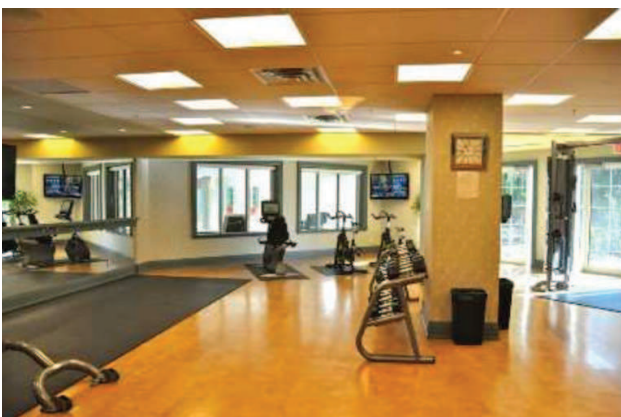


# PRELUDE II-R | 1140 SQ.FT.



State of the art amenities:

- Large party room
- Swimming pool
- Virtual golf
- Aerobic and fitness centre
- Games room
- Board room
- Media room
- Guest suites
- BBQ area



# 20 Bloorview Place



**ASHLEY LO**

SALES REPRESENTATIVE

CENTURY 21 TIMES SQUARE REALTY INC., BROKERAGE

550 HIGHWAY 7 EAST, UNIT #308

RICHMOND HILL, ON L4B 3Z4

CELL: (416) 918-7801

OFFICE: (905) 707-8883 FAX: (905) 707-8886

EMAIL: REALTY@ASHLEYLO.COM

WEBSITE: WWW.ASHLEYLO.COM

Not intended to solicit Sellers or Buyers currently under written contract with another Realtor. This brochure is prepared and issued in good faith and is intended to give a fair summary of the property. Any description or information given should not be relied upon as a statement or representation of fact or that the property or its services are in good condition. The photographs show only certain parts of the property at the time they were taken.